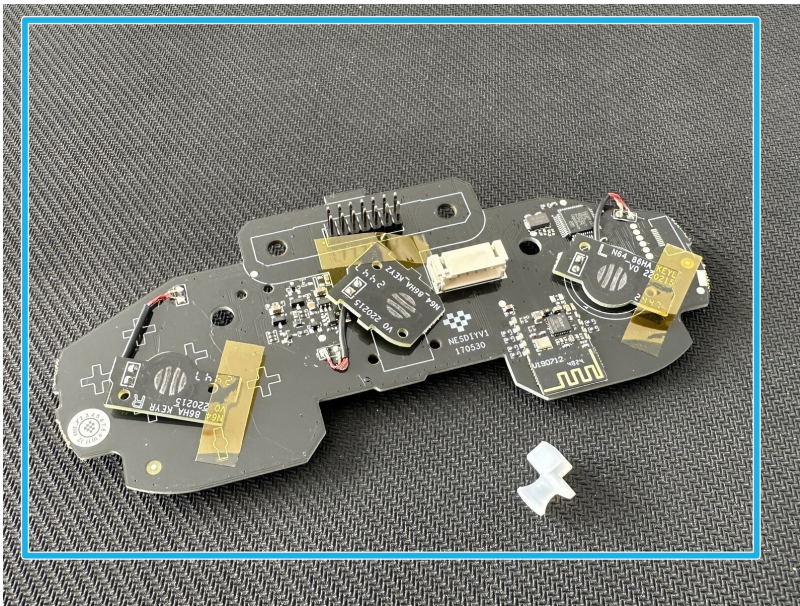




# Installation of the 8BitDo Mod Kit for Original N64 Controller

This tutorial will guide you through the...

Written By: Marc\_Alz



# INTRODUCTION

This tutorial will guide you through the installation of the 8BitDo mod kit for Nintendo 64 controller.

---

## TOOLS:

Phillips #0 Screwdriver (1)

## PARTS:

8BitDo Mod Kit for Original N64 Controller (1)

---

### Step 1 — Nintendo 64 Controller Teardown



- Behold the glorious retro controller face, then forget about it because you will flip the controller for the rest of the teardown.
- Use the size #1 Philips to remove the 7 screws on the back of the controller.
- Use the size #0 Philips to remove the smaller screws in the controller pak slot.

## Step 2



- Remove the back plate. You can now see the:
- Power Input
- Game Pak Slot
- Trigger Button Assemblies
- Z Button Assembly
- Joystick Module

## Step 3



- Using a spudger or similar tool, carefully pry the Z button assembly from the joystick module.
- Remove the 3 size #0 screws holding in the joystick module.
- Remove the joystick cable from the main board.

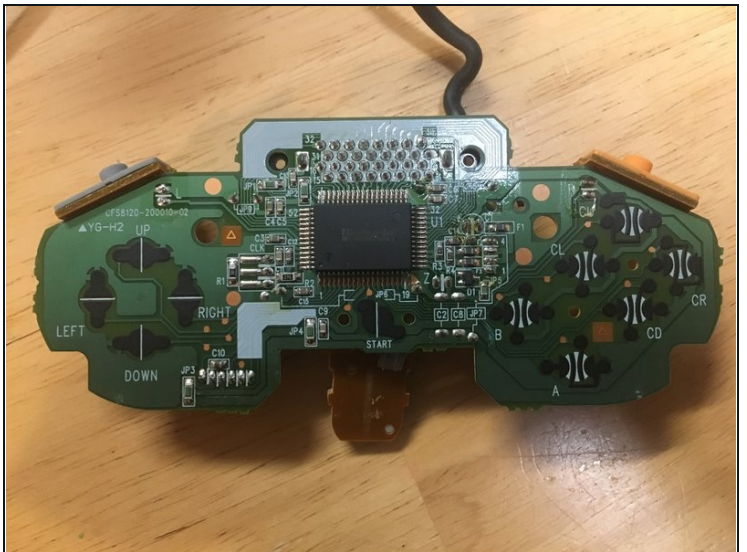


## Step 4



- Remove the joystick module.
- ⓘ This particular module is a third party replacement. Yours may look different.

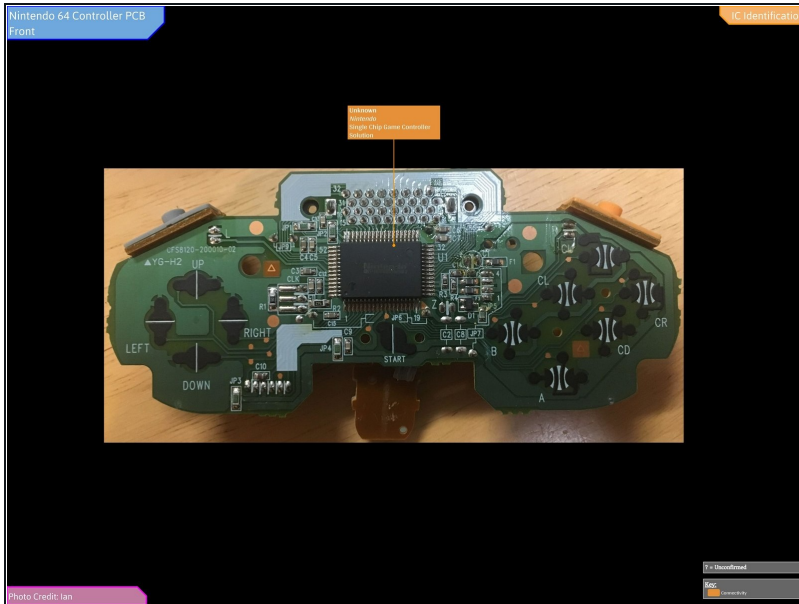
## Step 5



- Remove the main board and trigger assemblies.
- Your controller is now fully disassembled!

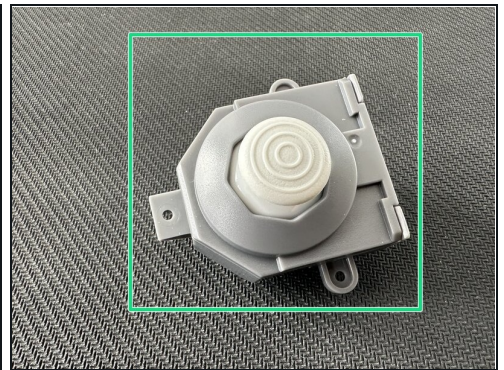
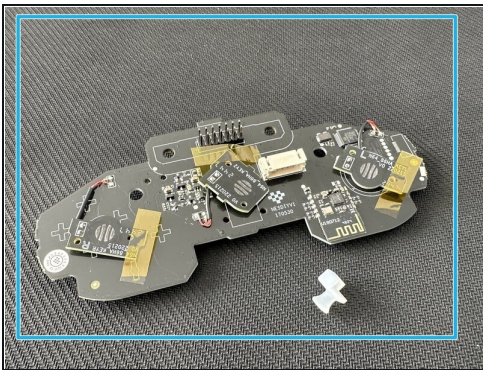


## Step 6



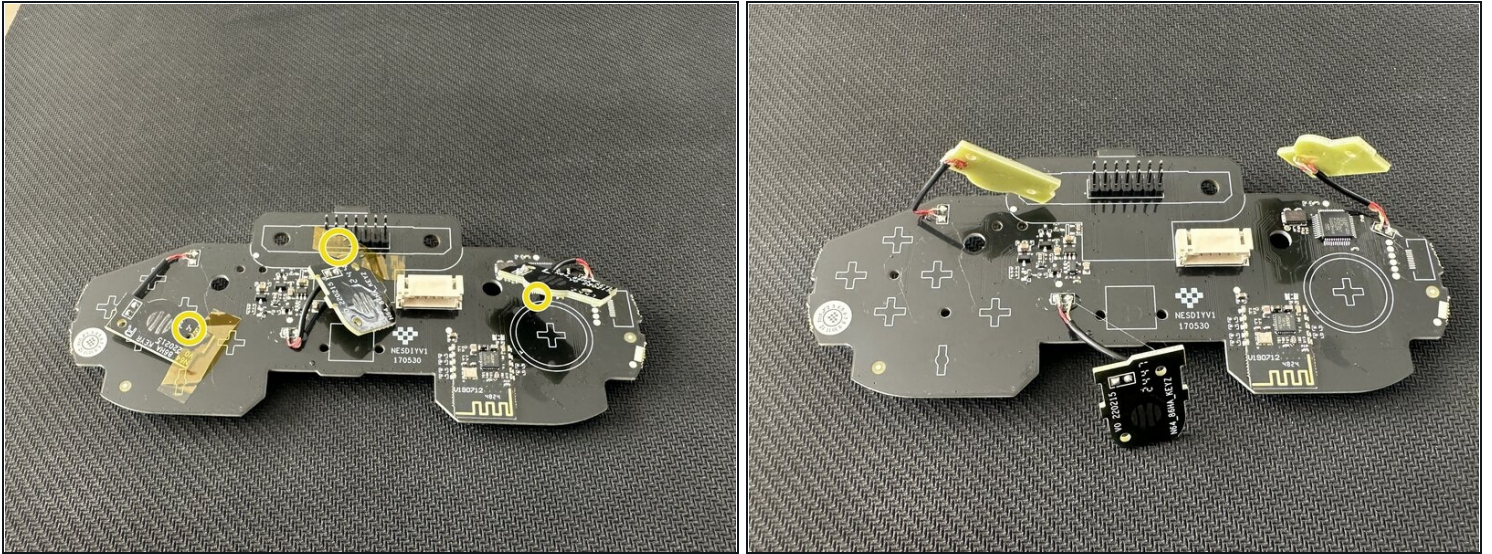
- Full IC Identification:
- ① You may need to enlarge it to view the text.

## Step 7 — Prepare all the mod kit elements



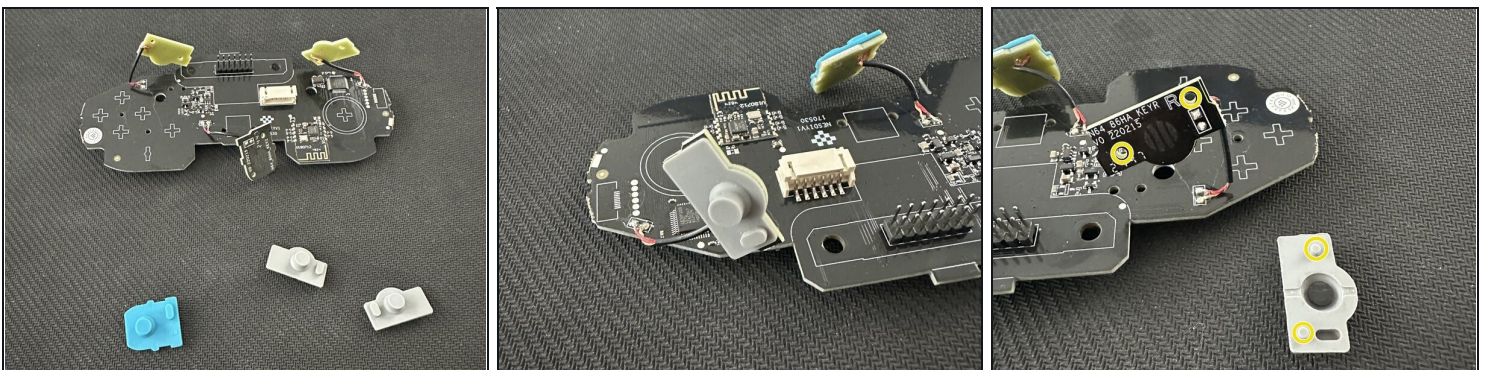
- Rumble pak / wireless connector
- Hall effect stick
- Mother board

## Step 8 — Remove motherboard tapes.



- Remove carefully tapes that keep L, R, Z buttons contacts in place. *Wires seems fragile act with precautions*

## Step 9 — Put Z, L, R button's membranes



- Place membranes on their respective motherboard connectors. Holes are positioned on the connector to guide your positioning.



## Step 10 — Place buttons and membranes on the front shell.



- Put buttons in their respective holes, cutout are there to avoid any misplace.

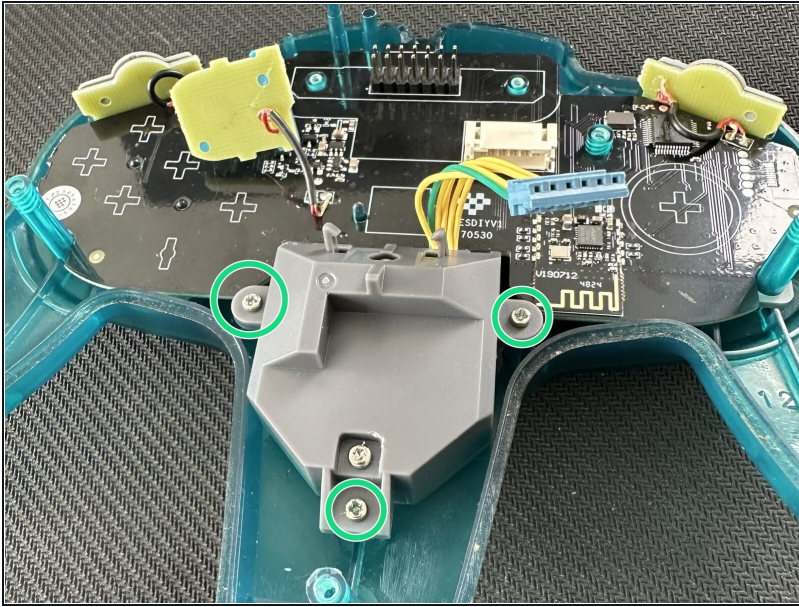
## Step 11 — Position the motherboard on the front shell.



- Put the motherboard on the front shell.
- Place L and R connectors in their housing.
- Don't forget the silicone in the old cable enclosure.

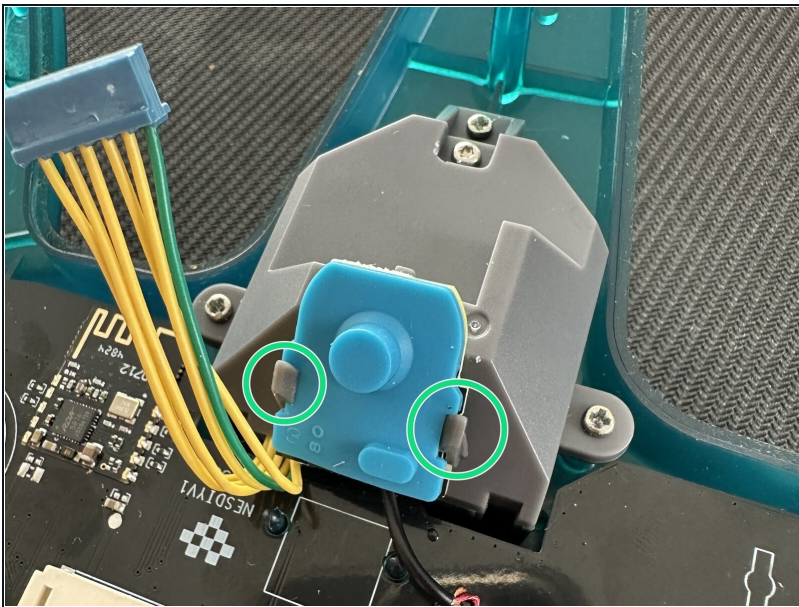


## Step 12 — Place the new stick in its enclosure



- Place the stick.
- Tighten the 3 screws.

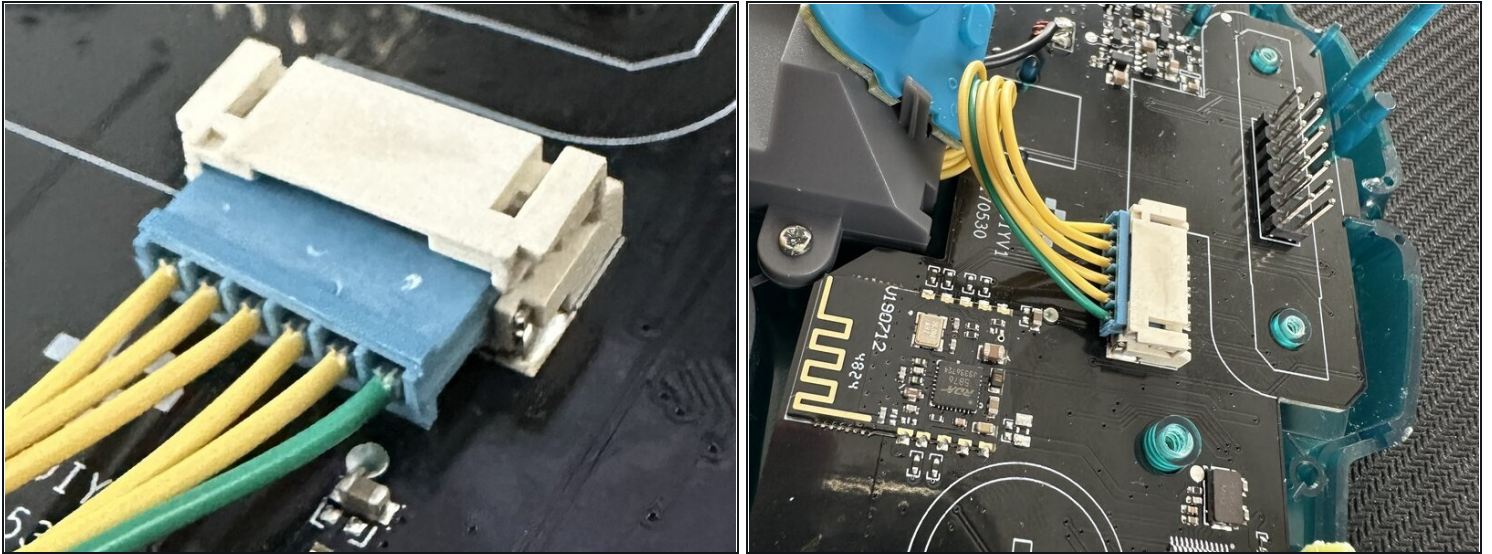
## Step 13 — Attach the Z button connector to the stick module



- Attach the Z button connector and its membrane onto the stick clips.

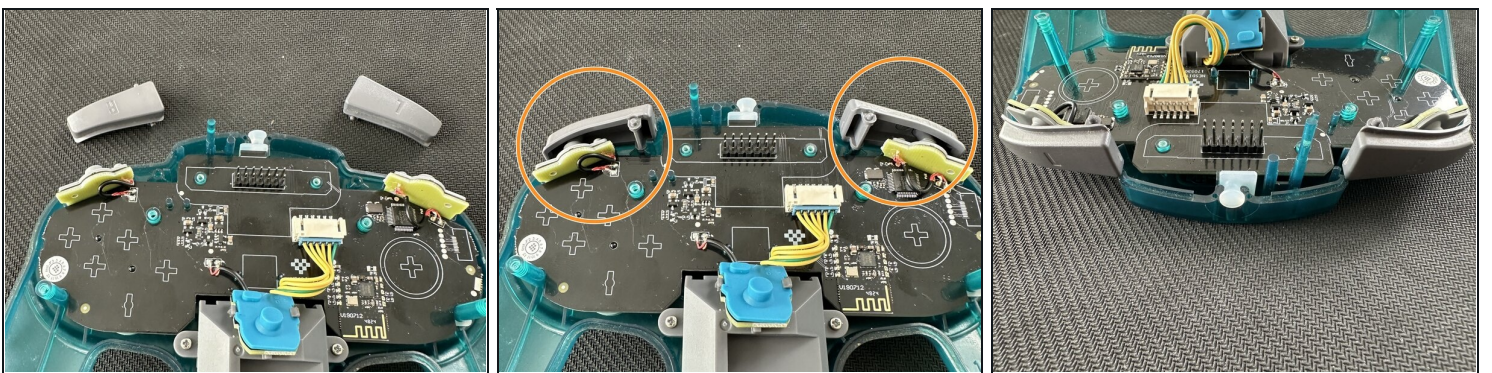


## Step 14 — Connect the stick



- Insert the stick plug inside its connector on the motherboard.
- The green wire must be on the L button side.
- *If the controller is positioned with the stick in front of you, the L button is on your right, remember you are working upside down.*

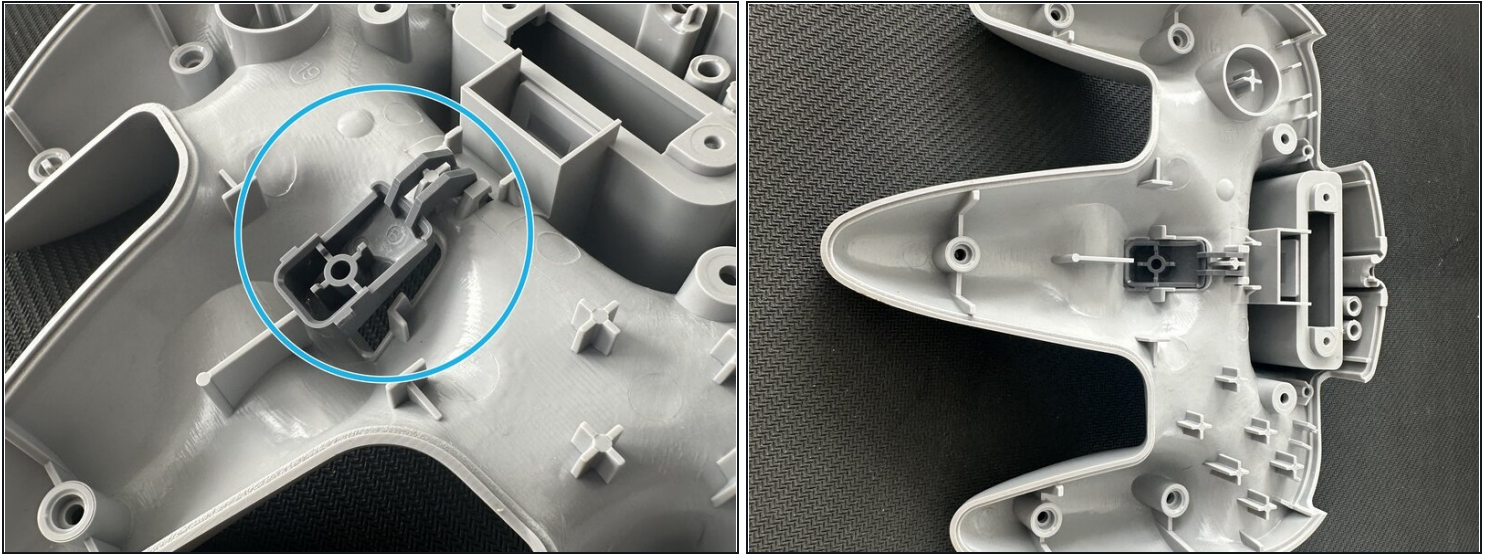
## Step 15 — Place L and R buttons



- Place L and R buttons on the front shell.



## Step 16 — Place the Z button



- Place the Z button on the bottom shell.

## Step 17 — Assemble the controller and tighten the screw



- Put together top and bottom shells.
- Place the bottom part on to the top one, doing the opposite may led some part to fall.
- **At first**, tighten only the first 3 screws, this will reduce undo steps in case of problem.



## Step 18 — Connect the rumble pak



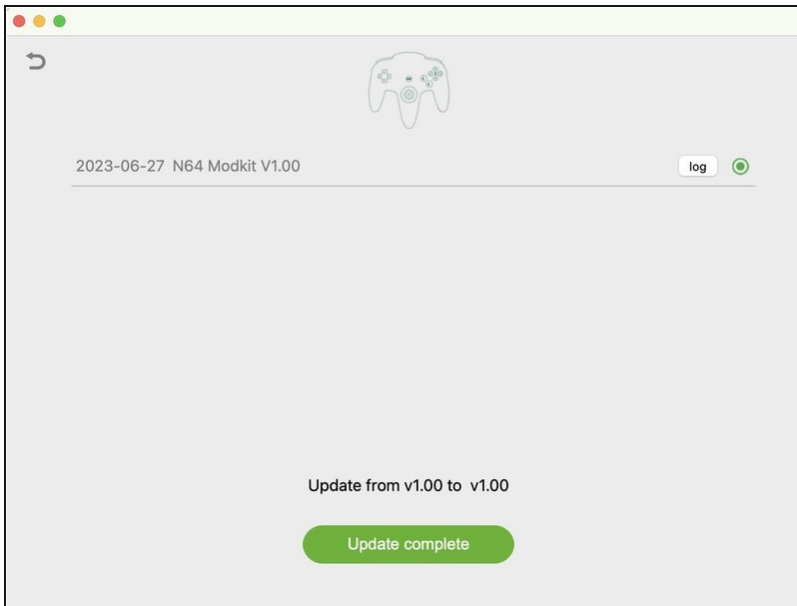
- Place the rumble pak in its enclosure.

## Step 19 — Test the controller



- For this part will use the Nintendo Switch
- Connect the controller to your console. Put the rumble pak in "S" position (via its bottom switch), push "Start" and hold connect button to start pairing.
- If the controller does not appear, try to update it (see next step).
- Test each button via the Nintendo Switch dedicated button tester menu. Access it via the switch settings "Controller and sensors" section then submenu "Test input controller". See the [official Nintendo documentation](#) for more information.
- *n.b its important to test each button before re-assembling.*

## Step 20 — Optional - Update the controller



- Download the 8BitDo [upgrade tool](#).
- Connect the controller to a computer via an USB-C cable. (the rumble pak must be attached to the controller).
- Do the upgrade. *Even it says 1.00 to 1.00*

## Step 21 — Tighten the last screws



- Once everything works tighten the last bottom screws.
- Do not forget to tighten the extension port screws.

---

Your controller is now fully operational with windows and android bluetooth devices. It also works with the Nintendo Switch and its Nintendo 64 app provided with a Nintendo Switch Online Subscription.